

JSNA Blackpool

Joint Strategic Needs Assessment

Search

- [Home](#)
- [Blackpool Profile](#)
- [Blackpool profile](#)
- [Summary Health Profile](#)
- [Population](#)
- [Ethnicity](#)
- [Religion and Belief](#)
- [Births Deaths](#)
- [Life Expectancy](#)
- [Mortality](#)
- [Blackpool GP Practice Populations](#)
- [Ward Profiles](#)
- [Assets Map](#)
- [Citizens Inquiries](#)

Home > Blackpool Profile > Ethnicity

Ethnicity

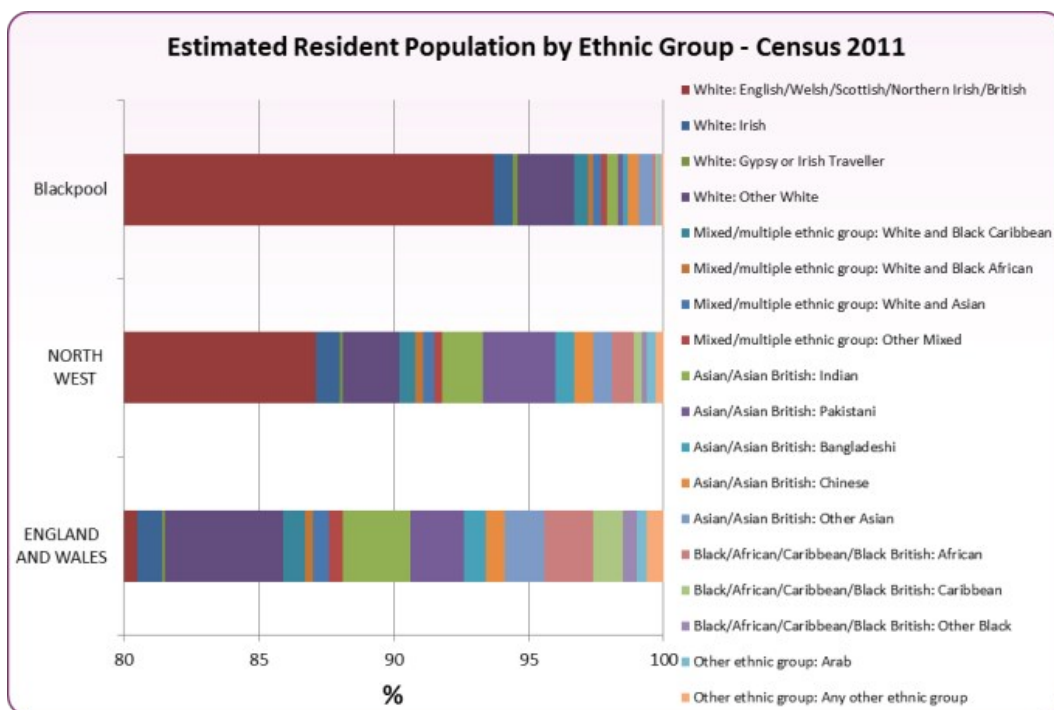


Last Modified 15/01/2020 10:45:14

[Share this page](#)

The 2011 Census indicates that a significantly smaller percentage of ethnic minority groups live in Blackpool compared to the North West and England and Wales. 3.3% of Blackpool's residents are classed as ethnic minorities compared to 9.9% in the North West and 14% in England (Figure 1).

Figure 1 - Estimated resident population by ethnic group and sex, Census 2011



Source: ONS Census 2011

Figure 2 - 2011 Estimated Resident Population by Ethnic Group

Ethnicity	Blackpool		North West		England and Wales	
	Persons	%	Persons	%	Persons	%
White	137,339	96.7%	6,361,716	90.2%	48,209,395	86.0%
Mixed	1,753	1.2%	110,891	1.6%	1,224,400	2.2%
Asian or Asian British	2,282	1.6%	437,485	6.2%	4,213,531	7.5%
Black or Black British	346	0.2%	97,869	1.4%	1,864,890	3.3%
Chinese or other	345	0.2%	44,216	0.6%	563,696	1.0%

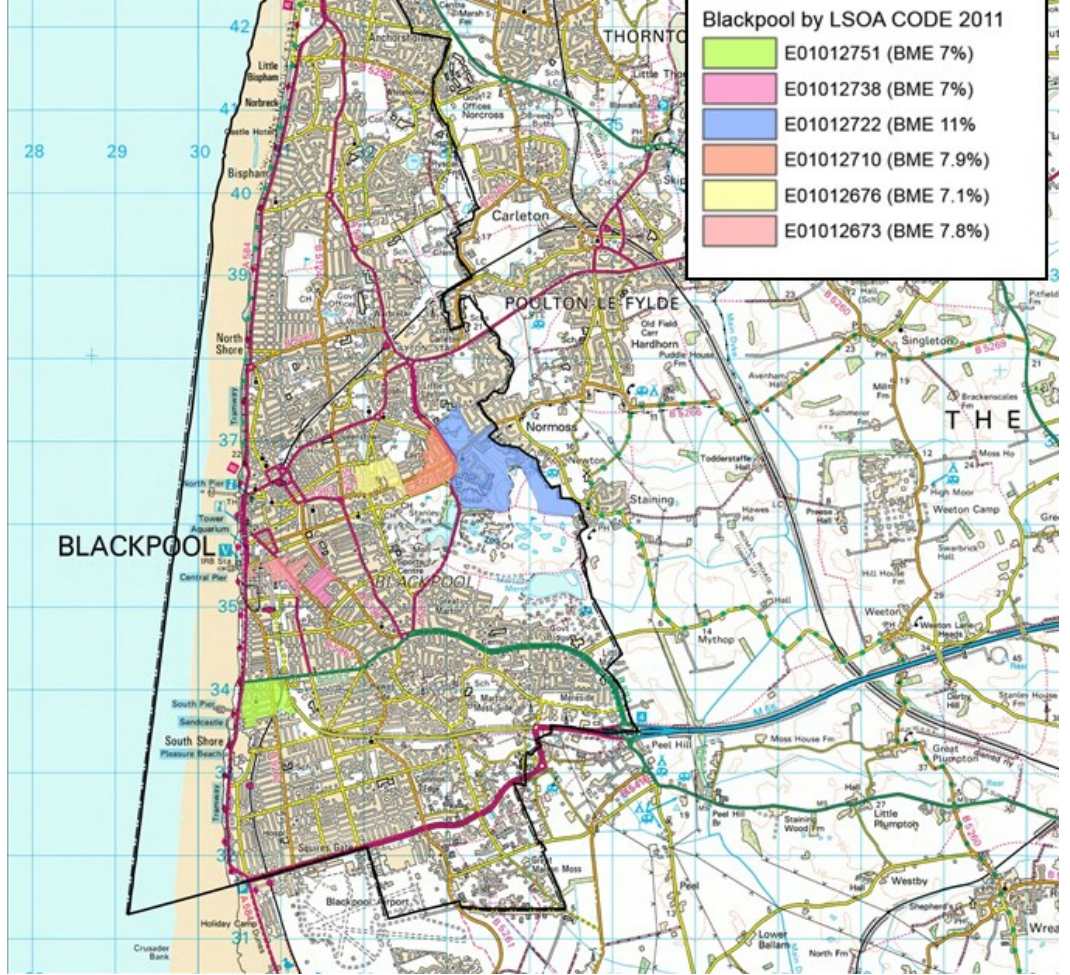
Source: ONS Census 2011

Other ethnic groups living in Blackpool

In Blackpool there are 6 LSOAs with relatively high proportions of the population in Black and Minority Ethnic (BME) groups and these neighbourhoods are shown in Figure 3. The BME populations are predominantly of Asian background.

Figure 3 - Other Ethnic Groups Living in Blackpool






Source: Neighbourhood Statistics - ONS

[↑ Back to top](#)

Social Networks

 Follow us on Twitter



SUPPORTED BY
Blackpool Council

Supported by


NHS
Blackpool
Clinical Commissioning Group